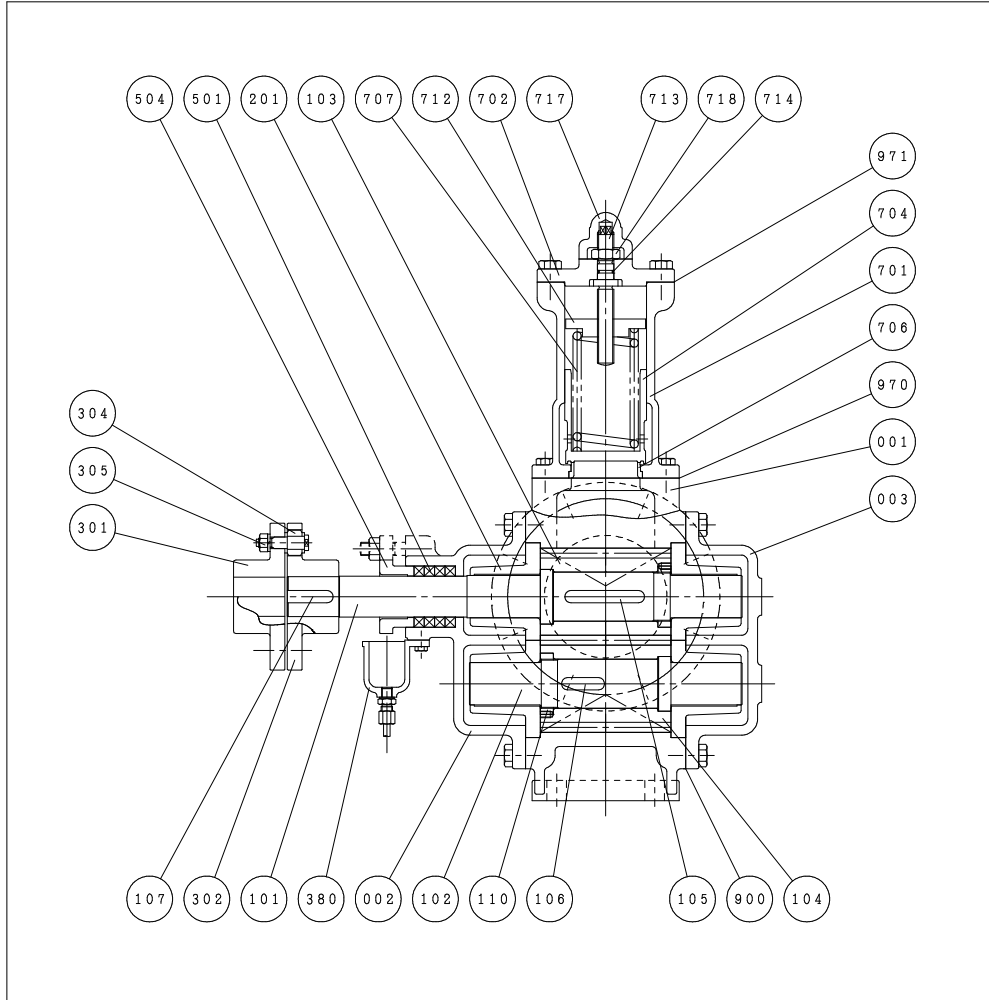


# 歯車ポンプ

型式番号

# HG



NO.	NAME	MATERIAL		Q' TY	NO.	NAME	MATERIAL		Q' TY
		SYMBOL	NAME OF MATERIAL				SYMBOL	NAME OF MATERIAL	
001	CASING	FC200	CAST IRON	1	701	SAFETY V. BOX	FC200	CAST IRON	1
002	SIDE COVER	FC200	CAST IRON	1	702	SAFETY V. COVER	FC200	CAST IRON	1
003	SIDE COVER	FC200	CAST IRON	1	704	SAFETY VALVE	S45C	CARBON STEEL	1
101	DRIVE SHAFT	S45C	CARBON STEEL	1	706	SAFETY V. SEAT	SUS410	STAINLESS STEEL	1
102	DRIVEN SHAFT	S45C	CARBON STEEL	1	707	SAFETY V. SPRING	SUP6	SPRING STEEL	1
103	DRIVE GEAR	S45C	CARBON STEEL	1	712	SPRING CARRIER	SS400	MILD STEEL	1
104	DRIVEN GEAR	S45C	CARBON STEEL	1	713	ADJUST SCREW	SS400	MILD STEEL	1
105	KEY	S45C	CARBON STEEL	1	714	O-RING	NBR	RUBBER	1
106	KEY	S45C	CARBON STEEL	1	717	SAFETY V. CAP	FC200	CAST IRON	1
107	KEY	S45C	CARBON STEEL	1	718	LOCK NUT	SS400	MILD STEEL	1
110	GEAR SET RING	S45C	CARBON STEEL	2	900	GASKET	-	PAPER	2
201	BEARING METAL	CAC603	LEAD BRONZE	4	970	GASKET	-	PAPER	1
301	COUPLING	FC200	CAST IRON	1	971	GASKET	-	PAPER	1
302	COUPLING	FC200	CAST IRON	1					
304	COUPLING RING	NBR	RUBBER						
305	COUPLING BOLT & NUT	SS400	MILD STEEL						
380	OIL PAN	FC200	CAST IRON	1					
501	GLAND PACKING	-	CARBONIZED FIBER	4					
504	GLAND	CAC402	BRONZE	1					

G3281S20001

HG-35~50

SERVICE	
MODEL	HG-35~50
DRAWING NO.	S0533A009L01

TAIKOKIKAI INDUSTRIES CO.,LTD.